

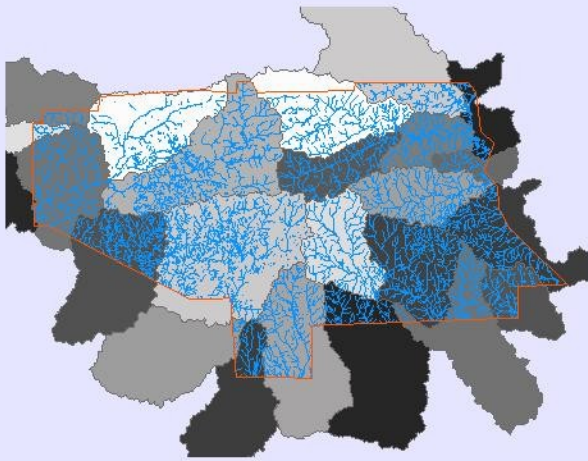


Storm Water Management Program

In May of 2001 the governmental agencies that make up ALOA joined together to address EPA's upcoming Phase II requirements.

This brochure is one of a series of publications regarding storm water issues in Lee County.

The series is produced by the ALOA Storm Water Advisory Panel and is intended to protect, maintain, and restore the chemical, physical, and biological integrity of local waters in order to enhance the quality of life for our citizens.



Saugahatchee Watershed



A beautiful summer day on Saugahatchee Creek

Contact Information

For more information regarding your community's storm water program please contact the following agencies:

City of Auburn – Department of Water Resource Management
334-501-3077
www.auburnalabama.org/wrm

Lee County – County Engineer
334-745-9792
www.leeco.us

City of Opelika – Department of Public Works
334-705-5400
www.opelika.org

Auburn University – Risk Management and Safety
334-844-4805
www.auburn.edu/administration/rms/

A Publication Presented by



Saugahatchee Watershed

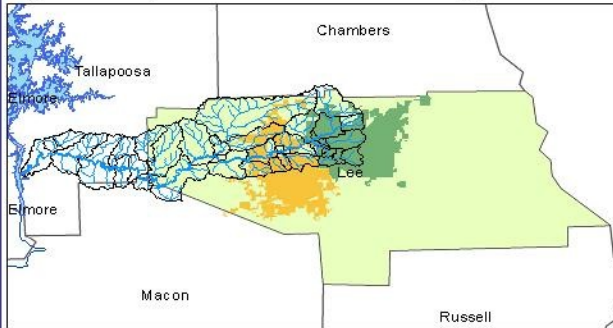


ALOA

“Local Citizen Groups and Governments Working Together for Clean Water”

SAUGAHATCHEE CREEK AT A GLANCE:

Saugahatchee Creek is an approximate 55-mile long perennial tributary of the Tallapoosa River that originates in north-central Lee County, thereafter generally traversing west-southwest through Lee County, extreme northern Macon County, and southern Tallapoosa County before discharging into the Saugahatchee Embayment of the Yates Reservoir. The total area of the watershed serving Saugahatchee Creek is approximately 220 square miles (138,740 Acres), of which only 8-10% is classified as urban. However, dynamic growth within Lee County, and more specifically within the Auburn/Opelika Metropolitan area, has and will likely continue to increase the percentage of urban landuse within the watershed. Other towns/cities located along Saugahatchee Creek include Loachapoka, Notasulga, and Reeltown (in order from upstream to downstream). Increased urban growth and subsequent deforestation within and around these cities and towns expose Saugahatchee Creek to increased threats of pollution. Additionally, both agriculture and silvaculture practices present an equal or greater concern to the watershed, as they compose approximately 20% of the total landuse. These causes for concern are confirmed by the Alabama Department of Environmental Management's (ADEM) listing of Pepperrell Branch of Saugahatchee Creek and the Saugahatchee Embayment of Yates Reservoir on the States 303(d) list of impaired waterbodies. Excessive nutrient loading has been identified as the primary cause of pollution, leading to organic enrichment, subsequent algae blooms, and decreased dissolved oxygen.

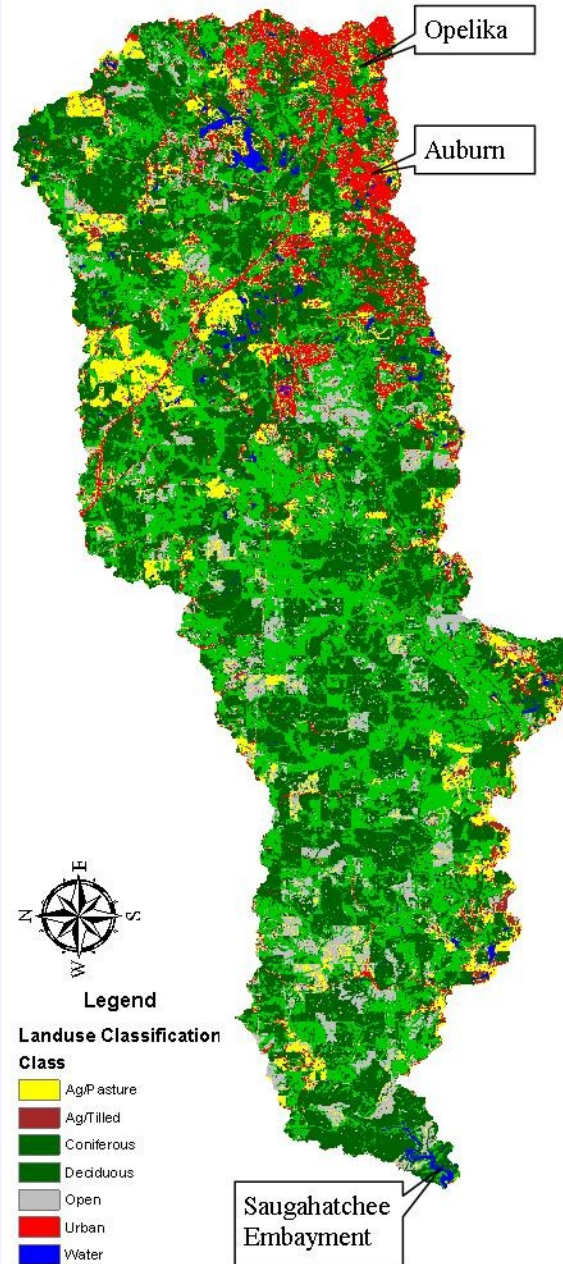


Saugahatchee Creek and Saugahatchee Watershed

Landuse/Landcover	Sq. Miles	% Coverage
Water	3	1
Coniferous Forest	90	41
Deciduous Forest	68	31
Urban	17	8
Ag/Pasture	15	7
Open	23	11
Ag/Tilled	3	1
Sum	218	100

2008 Landuse for Saugahatchee Watershed

LANDUSE IN SAUGAHATCHEE WATERSHED



WHAT'S BEING DONE AND HOW CAN I HELP?

State and local governments and citizen groups alike, have all taken great strides toward protecting the future of Saugahatchee Creek and the Saugahatchee Watershed. Numerous State (ADEM) funded projects, including the Saugahatchee Watershed Management Plan or SWAMP for short, have been implemented in recent years. The efforts of SWAMP, combined with the efforts of the local governments such as the City of Auburn, the City of Opelika, and Lee County are helping to raise awareness of the natural beauty and benefits of Saugahatchee Creek and of the need to protect it for future generations. Whether it be through construction of innovative on-the-ground projects such as stream restoration or rainwater harvesting or through education and outreach initiatives, these organizations are helping to resolve and remediate problems of the past while preventing problems for the future. Additionally, grassroots efforts of tireless citizen groups such as the Save-Our-Saugahatchee are working to reach out to all stakeholders to promote collaborative and comprehensive protective measures and to serve as advocates for a clean and healthy Saugahatchee Creek.



Saugahatchee Bank Stabilization Project



Cary Woods Rain Garden and Cistern Project

FOR MORE INFORMATION ON HOW TO GET INVOLVED VISIT ANY OF THESE ORGANIZATIONS:

- WWW.AUBURNALABAMA.ORG/WRM
- [HTTP://WWW.ACES.EDU/DEPT/FISHERIES/AWW/SWAMP/](http://WWW.ACES.EDU/DEPT/FISHERIES/AWW/SWAMP/)
- [HTTP://WWW.ACES.EDU/DEPT/FISHERIES/AWW/AWW](http://WWW.ACES.EDU/DEPT/FISHERIES/AWW/AWW)
- WWW.CLEANWATERPARTNERSHIP.ORG/OLD
- WWW.LEE.AL.NACDNET.ORG
- WWW.ADEM.STATE.AL.US/WATERDIVISION